

淡江大學 105 學年度日間部轉學生招生考試試題

45

系別：電機工程學系三年級

科目：電路學

考試日期：7月22日(星期五) 第3節

本試題共 4 大題， 1 頁

1. As shown in Fig. 1, calculate the current i , the conductance G , and the power p . (25%)

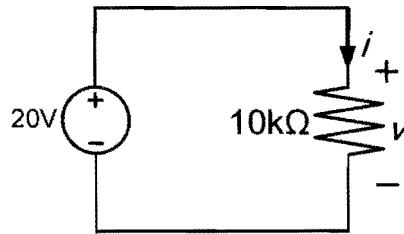


Fig. 1

2. Using Thevenin's theorem, find the equivalent circuit to the left of the terminals in the circuit of Fig. 2. Then find I . (25%)

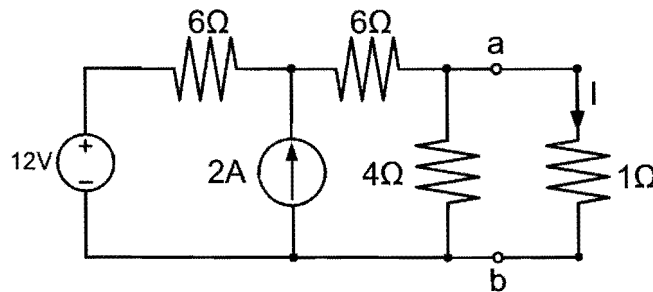


Fig. 2

3. Find the Norton equivalent circuit for the circuit in Fig. 3, at terminals a-b. (25%)

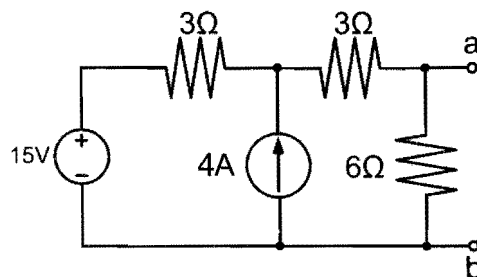


Fig. 3

4. Find the equivalent capacitance seen at the terminals of the circuit in Fig. 4. (25%)

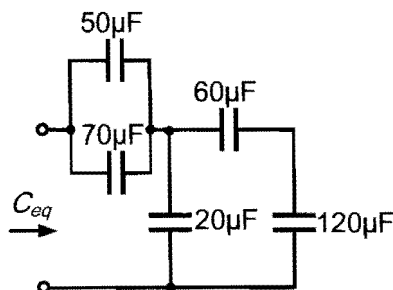


Fig. 4