

淡江大學九十學年度碩士班招生考試試題

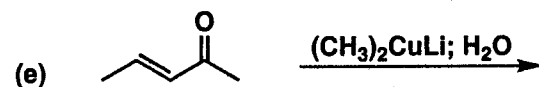
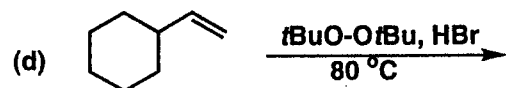
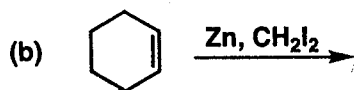
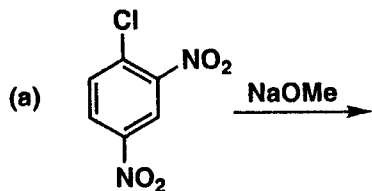
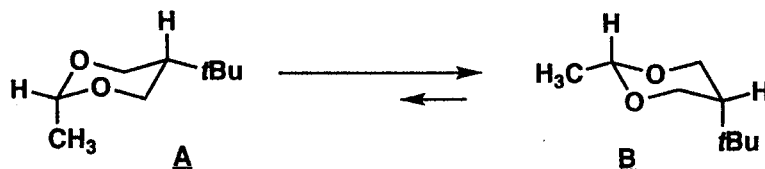
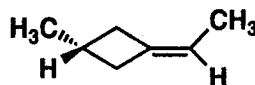
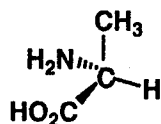
系別：化學學系

科目：有機化學

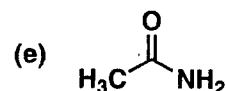
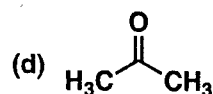
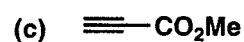
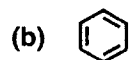
准帶項目請打「○」否則打「×」	
計算機	字典
×	×

本試題共 2 頁

1. show the products with stereochemistry for the following reactions. (10 pts)

2. Why conformer **B** is more stable than the conformer **A**? (10 pts)3. Show the absolute configuration (*R* or *S*) of these molecules by using Fischer Projection. (10 pts)

4. Predict the pKa value of the most acidic proton for the following molecules. (10 pts)



本試題雙面印製

淡江大學九十學年度碩士班招生考試試題

系列：化學學系

科目：有機化學

准帶項目請打「○」否則打「×」	
計算機	字典
×	×

本試題共 2 頁

5. Please suggest the reasonable mechanisms with arrows shown for electron movements for the following reactions. (60 pts)

