

66-1

淡江大學 96 學年度碩士班招生考試試題

系別：機械與機電工程學系

科目：工 程 數 學

准帶項目請打「V」	
<input type="checkbox"/>	簡單型計算機
本試題共 壹 頁	

1. (15%) Find the Laplace transform $\mathcal{L}[f]$, f has the graph of Figure 1.

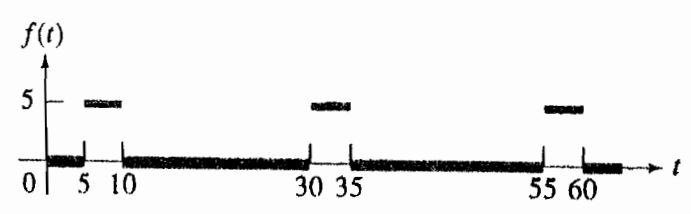


Figure 1

2. (15%) Solve $2y^2 - 9xy + (3xy - 6x^2)y' = 0$.
3. (15%) Solve $x^2y'' - 3xy' + 3y = 6x^4e^{-3x}$.
4. (20%) Evaluate $\iint_{\Sigma} f(x, y, z) d\sigma$ which is the surface integral of f over a smooth surface Σ . $f(x, y, z) = 1$, Σ is the part of the paraboloid $z = x^2 + y^2$ lying between the planes $z = 2$ and $z = 7$.
5. (15%) Evaluate $\int_{-\infty}^{\infty} \frac{x+2}{(x^2-4)(x^2+4)} dx$.
6. (20%) Solve the partial differential equation

$$\frac{\partial^2 y}{\partial t^2} = \frac{\partial^2 y}{\partial x^2} \quad (0 \leq x \leq 2, t > 0),$$

$$y(0, t) = 10, y(2, t) = 30 \quad (t > 0),$$

$$y(x, 0) = 10x, \frac{\partial y}{\partial t}(x, 0) = 0 \quad (0 \leq x \leq 2).$$