

淡江大學九十三年學年度進修學士班轉學生招生考試試題 20-1

系別：電機工程學系三年級

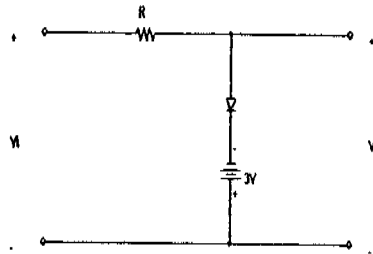
科目：電 子 學

准帶項目請打「○」否則打「×」	
	簡單型計算機

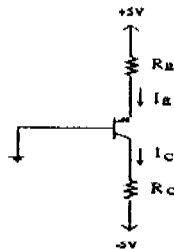
節次： 7 月 14 日 第 3 節  
本試題共 2 頁

本試題雙面印製

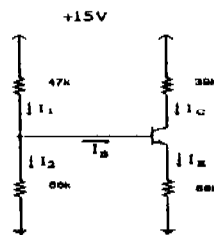
- 20% For an ideal op amp which one of the following characteristics is not correct?  
 (A) infinite input resistance  
 (B) infinite output resistance  
 (C) infinite differential voltage gain  
 (D) zero input offset voltage
- 20% Suppose the diode in the following circuit is ideal. Try to draw  $V_o(t)$  waveform.



- 20% In the following BJT circuit, try to select the  $R_E$  value such that the BJT will operate in the saturation region. Suppose  $\beta_{force} = 10$ .



- 20% In the following circuit, assume  $V_{BE} = 0.7V$  and  $\beta = 100$ . Solve  $I_B$ ,  $I_C$ ,  $I_E$  and  $V_{CE}$  values?



◀ 注意背面尚有試題 ▶

淡江大學九十三年學年度進修學士班轉學生招生考試試題<sup>20~2</sup>

系別：電機工程學系三年級

科目：電 子 學

准帶項目請打「○」否則打「×」	
	簡單型計算機

節次： 7 月 14 日 第 3 節  
本試題共 2 頁

5. 20% In the following circuit,  $V_{IE} = 1V$ ,  $K = 100\mu A/V^2$ , and  $\lambda = 0$ . Find  $V_o$ ?

