

淡江大學 99 學年度轉學生招生考試試題

系別：航空太空工程學系三年級

科目：工程力學(含靜力學、動力學)

本試題共 4 大題，2 頁

1. A gable frame is subjected to a wind loading, as shown in Fig. 1. Determine the reactions at its supports due to the loading. (25%)

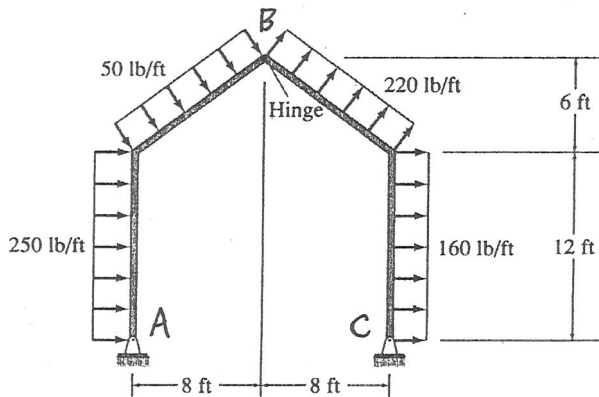
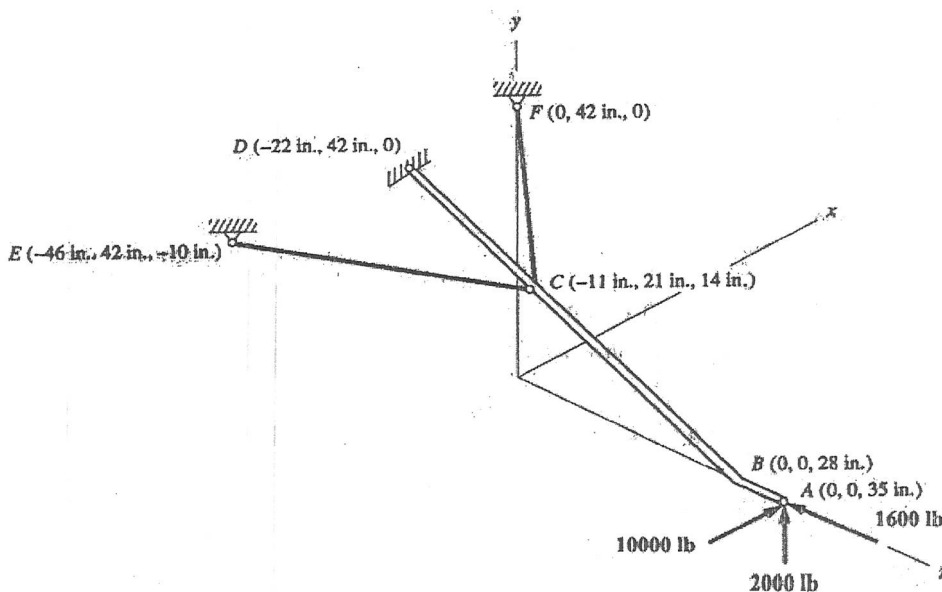


Fig. 1

2. The landing gear shown in Fig. 2 consists of the bent member $ABCD$ and the two supports CE and CF , which are two force members. Points D , E , and F connect to the fuselage. Point A receives the loads from the wheel. The connection at D can resist forces in all directions but only a torsion about BCD axis. Neglect the weight of the landing gear, calculate the forces in members CE and CF , N_{CE} and N_{CF} . (25%)



背面尚有試題

Fig 2

本試題雙面印刷

淡江大學 99 學年度轉學生招生考試試題

系別：航空太空工程學系三年級

科目：工程力學(含靜力學、動力學)

本試題共 4 大題，2 頁

3. The spring has an unstretched length of 0.4 m and a stiffness of 200 N/m. The 3-kg slider and attached spring are released from rest at A and move in the vertical plane. Calculate the velocity v of the slider as it reaches B in the absence of friction. (25%)

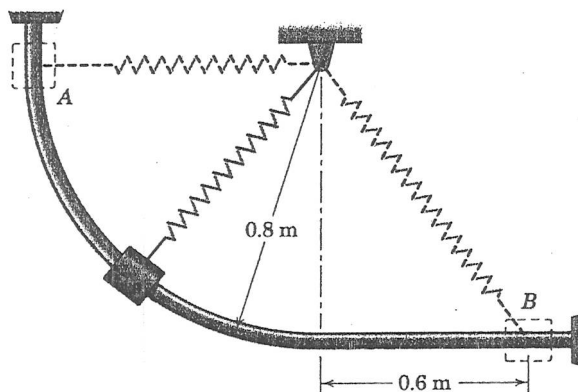


Fig. 3

4. A jet-engine noise suppressor consists of a movable duct that is secured directly behind the jet exhaust by cable A and deflects the blast directly upward. During a ground test, the engine sucks in air at the rate of 43 kg/s and burns fuel at the rate of 0.8 kg/s. The exhaust velocity is 720 m/s. Determine the tension T in the cable. (25%)

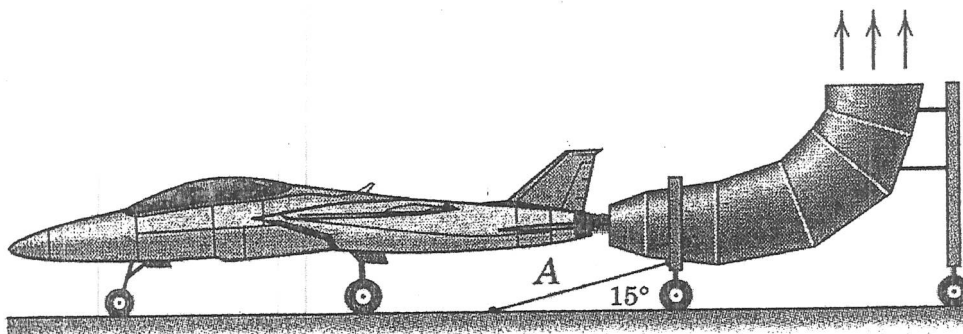


Fig 4